



FOR OFFICIAL USE ONLY

Somerset County Department of Health Public Health Emergency Preparedness Situation Update Coronavirus COVID-19 Update #4

Namitha Reddy, Director / Health Officer
nreddy@co.somerset.nj.us
908-231-7155

The Somerset County Department of Health is the lead county agency to coordinate public health disease response in emergencies, in partnership with the New Jersey Department of Health, the Centers for Disease Control and Prevention (CDC), local hospitals, medical providers, emergency medical services and other local health partners.

Somerset County, New Jersey	
Event Name	COVID-19 – Somerset County Department of Health (SCDOH) Response
Date	February 28, 2020
Time	2:30PM
Next Update	Weekly or as needed
Situation Update No.	4

Want to know what's new? Look for the highlighted sections.

What is the Current Situation?

COVID-19

New Coronavirus Outbreak

COVID-19 is **NOT** currently spreading in the community in the U.S.

COVID-19 Cases

Cases in the United States	15
Cases in New Jersey	0
Cases in Somerset County, NJ	0

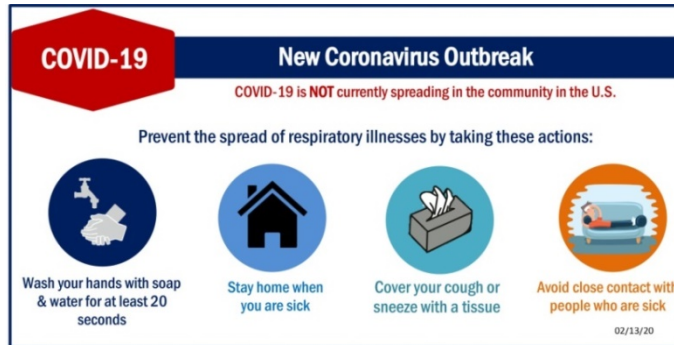
*CDC data as of 12pm on 2/28/20

Prevent the spread of respiratory illnesses: Wash your hands with soap & water for at least 20 seconds, stay home while sick, cover your cough or sneeze and avoid close contact with people who are sick.

- The Centers for Disease Control and Prevention (CDC) is closely monitoring an outbreak of respiratory illness caused by a new coronavirus named 2019-nCoV. On February 11, 2020, the World Health Organization(WHO) announced an official name for the disease causing current outbreak of coronavirus disease, COVID-19.
 - The outbreak first started in Wuhan, China, but cases have been identified in a growing number of other international locations, including the United States.
- **For more information:** <https://www.cdc.gov/>
- <https://www.nj.gov/health/>
- <https://www.co.somerset.nj.us/health>

How Can I Protect Myself from the New Coronavirus?

The CDC always recommends everyday preventive actions to help prevent the spread of respiratory viruses. To protect yourself, you should:



➔ For more information: <https://www.cdc.gov/coronavirus/2019-ncov/downloads/what-you-should-do.pdf>

What do Healthcare Professionals Need to Know?

- Health care providers should remain vigilant, and obtain detailed travel history for patients being evaluated with fever and acute respiratory illness.
- If patient meets the criteria in the chart (below) place facemask on patient, and isolate in a private room or a separate area.
- Report any at risk-patients and their clinical status to the local health department where the patient resides.
- Patients should be evaluated and the public health department contacted on a case-by-case basis if clinical presentation or exposure history is equivocal (e.g., uncertain travel or exposure).
- The criteria are intended to serve as guidance for evaluation.
- As of February 28, 2020, The New Jersey Public Health and Environmental Laboratories (PHEL) has the ability to conduct testing for COVID-19. Approval for testing will be granted only after clinical and epidemiologic criteria of the suspect report is reviewed by the local health department and the NJDOH.

Symptoms	&	Exposure
Fever or signs/symptoms of lower respiratory illness (e.g. cough or shortness of breath)	-and-	Any person, including health care workers, who has had close contact* with a laboratory-confirmed COVID-19 patient within 14 days of symptom onset
Fever and signs/symptoms of a lower respiratory illness (e.g., cough or shortness of breath) requiring hospitalization	-and-	A history of travel from affected geographic areas (see below) within 14 days of symptom onset
Fever with severe acute lower respiratory illness (e.g., pneumonia, ARDS) requiring hospitalization and without alternative explanatory diagnosis (e.g., influenza)	-and-	No source of exposure has been identified
Affected Geographic Areas with Widespread or Sustained Community Transmission <i>(Updated February 26, 2020)</i> <ul style="list-style-type: none"> • China • Iran • Italy • Japan • South Korea 	*Close contact is defined as follows: a) being within approx. 6 feet, or within the room/care area, of a confirmed case for a prolonged period of time while not wearing recommended personal protective equipment or PPE. <p style="text-align: center;">- OR -</p> b) having direct contact with infectious secretions (e.g., being coughed on) while not wearing recommended personal protective equipment.	

- For more information: <https://www.cdc.gov/coronavirus/2019-nCoV/hcp/index.html>
- https://www.nj.gov/health/cd/documents/topics/NCOV/Surveillance_Criteria_and_Testing_for_2019_nCoV.pdf

What do Hospitals and Medical Laboratories Need to Know?

- All U.S. hospitals need to be prepared for patients with suspected or confirmed novel coronavirus 2019 (COVID-19).
 - Information regarding recommendations for reporting, testing, specimen collection, interim healthcare infection prevention, and control recommendations for patients under investigation for COVID-19, can be obtained from CDC.
 - As of February 6, 2020, the CDC has developed a laboratory test kit to detect 2019 novel coronavirus (COVID-19). The test kits will be distributed to local labs; SCDOH will provide labs with updated guidance once available.
- For more information: <https://www.cdc.gov/coronavirus/2019-ncov/lab/index.html>

What are the Recommendations for Travelers?



Due to the evolving situation, travel recommendations to countries are being updated by the CDC. For the most current information, visit: <https://www.cdc.gov/coronavirus/2019-ncov/travelers/index.html>.

What do Businesses Need to Know?

- The following interim guidance from CDC may help prevent workplace exposures to acute respiratory illnesses, including COVID-19, in non-healthcare settings.
- https://www.cdc.gov/coronavirus/2019-ncov/specific-groups/guidance-business-response.html?CDC_AA_refVal=https%3A%2F%2Fwww.cdc.gov%2Fcoronavirus%2F2019-ncov%2Fguidance-business-response.html

What do Schools Need to Know?

- Instruct all students and staff who have traveled to the **affected areas listed above** in the past 14 days to contact the school.
 - School nurses should continue to monitor students and staff who exhibit respiratory symptoms.
 - Report any ill students with a travel history to the local health department *immediately*.
 - Students, faculty and staff should be reminded to stay home from school and events when ill.
 - At this time, there is no need to cancel school or social events, as there are no cases of COVID-19 in New Jersey.
 - Everyone should follow general guidelines for hand hygiene and for preventing disease, as noted in the “*How Can I Protect Myself from the New Coronavirus?*” section above.
- For more information: <https://www.cdc.gov/coronavirus/2019-ncov/specific-groups/guidance-for-schools.html>


Preparing Individuals and Communities



- Everyone should follow general guidelines for hand hygiene and for preventing disease, as noted in the “*How Can I Protect Myself from the New Coronavirus?*” section above.
- <https://www.cdc.gov/coronavirus/2019-ncov/preparing-individuals-communities.html>


This is a rapidly evolving situation, so everyone should keep up-to date on the most current information by regularly visiting one of these trusted public health sources:

COVID-19 **New Coronavirus Outbreak**

Get the most up-to-date information on the new coronavirus from trusted sources:




 www.cdc.gov/  www.who.int/

 www.nj.gov/health/  www.co.somerset.nj.us/health

02/19/20

COVID-19 **New Coronavirus Outbreak**


If you are a **health professional** or **first responder** in Somerset County with questions on the new coronavirus, our public health preparedness team is here to assist you.



**Coronavirus COVID-19
Health Line
908-203-6014**

Members of the **public** with questions should call the New Jersey Poison Control Center at 1-800-222-1222

COVID-19 **New Coronavirus Outbreak**



**24-Hour Public Hotline
1-800-222-1222**

Members of the **public** can call for questions about the 2019 Coronavirus (COVID-19). Coronavirus questions are being handled by the health experts at the New Jersey Poison Control Center. The call is free.

The SCDOH is taking proactive preparedness precautions by monitoring the situation, enhancing disease surveillance, working with area healthcare providers, and keeping the public informed. The most up-to-date information will be made available on the SCDOH website at www.co.somerset.nj.us/health.

If you have questions on this guidance, please email health.educator@co.somerset.nj.us.

**